

100%

380 - 7

TEL : 053 - 857 - 5900, FAX : 053 - 857 - 5905

<http://www.eduk.co.kr> e - mail : eduk@eduk.co.kr





1989

1998 : { () : }

2000 (160)

2003 (480),

2005 : 75 /2005 , 13 (R&D : 5)



(R&D)

2002 (58) ()

2006 (INNO - BIZ) ()

2004 가 (: 0418258)

(: 0443826)

(: 0439663)



2000 ISO 9001, ISO 14001 (QMI)

2001 KS(11) GQ (12) : 2006

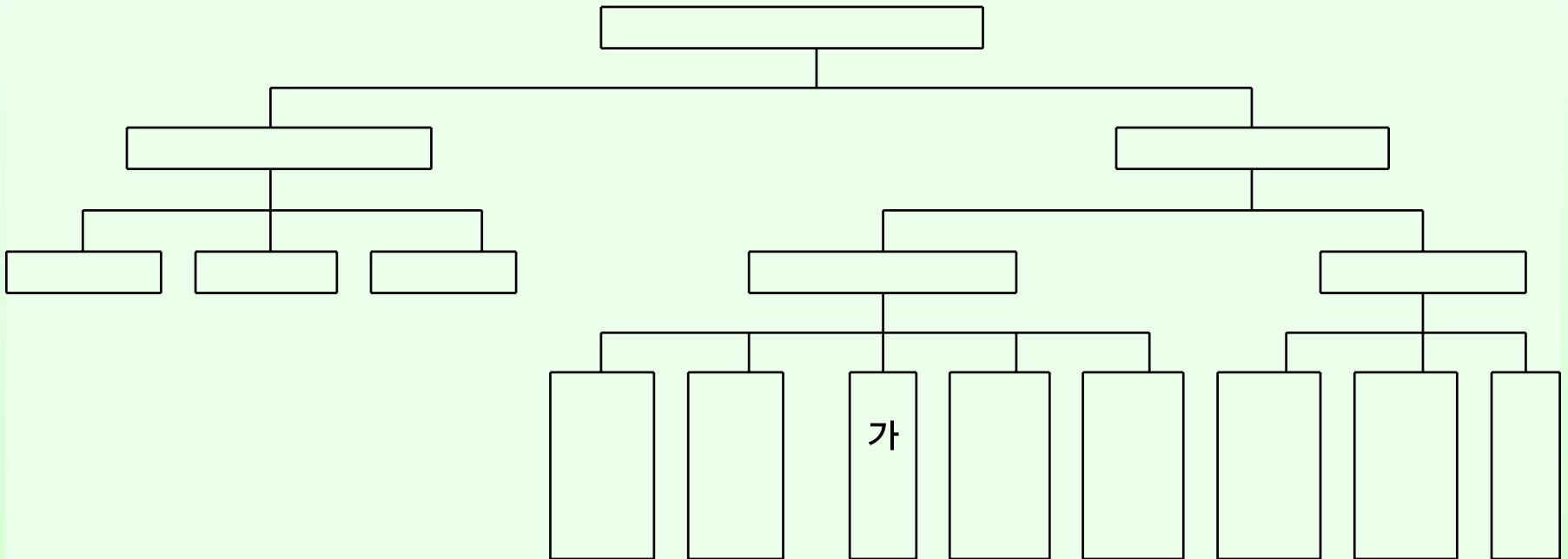
2002

2004 - ()





- : 1kgf/cm^2 ,
- : 0.1kgf/cm^2 1kgf/cm^2 ,
- (Fin) : 0.1kgf/cm^2 ,



,



(Compressor Oil)



-
-
-
-

()

(Ash)



가



.

.

가 , 가 가

가 가



,

가

.



-
-
-
-
-
-

(過多)

가



-
-
-
-
-
-
-
-

(가)

가

.



		PAOs	PAGs	Ester
/				
(消泡性)				
(가)				



3%

6 ~1



()

80%



ASTM D 6079 (HFRR :)

(100%)

가

가



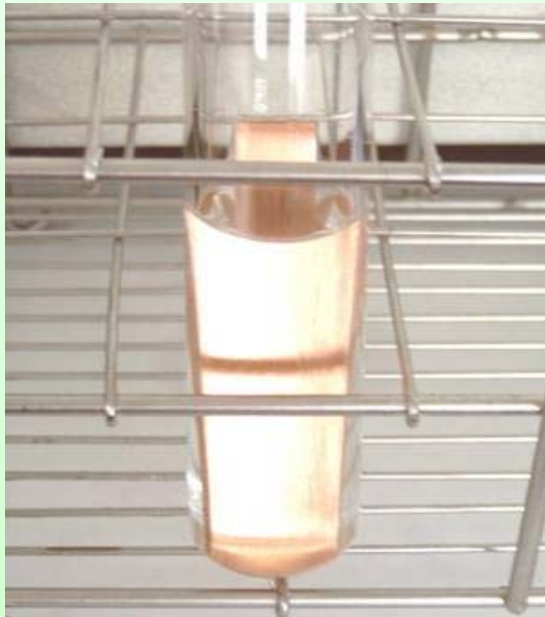
가			Comp syn 46	Comp syn 68	가
(cSt, 40)	cSt	10	46	68	KS M 2014
		10	- 50	- 50	KS M 2016
(170 ,12h)		10			KS M 2022
	mgKOH/g	10	0.05	0.05	KS M 2008
(107 .22h)	%	10	1.0	1.0	KS M 2037
	μm	10	250	250	ASTM D 6079
Ash()	%	10	0.05	0.05	KS M 6245
(100 3h)	-	5	1b	1b	KS M 2525
(, 24h)	-	5			KS M 2009
() 54	Min	10	5	5	
(Hg, Pb, Cd, Cr ⁺⁶)	ppm	10			ICP - MS

- : ASTM D 6079 (HFRR :) 가
- : KS

(100%)



(100%)

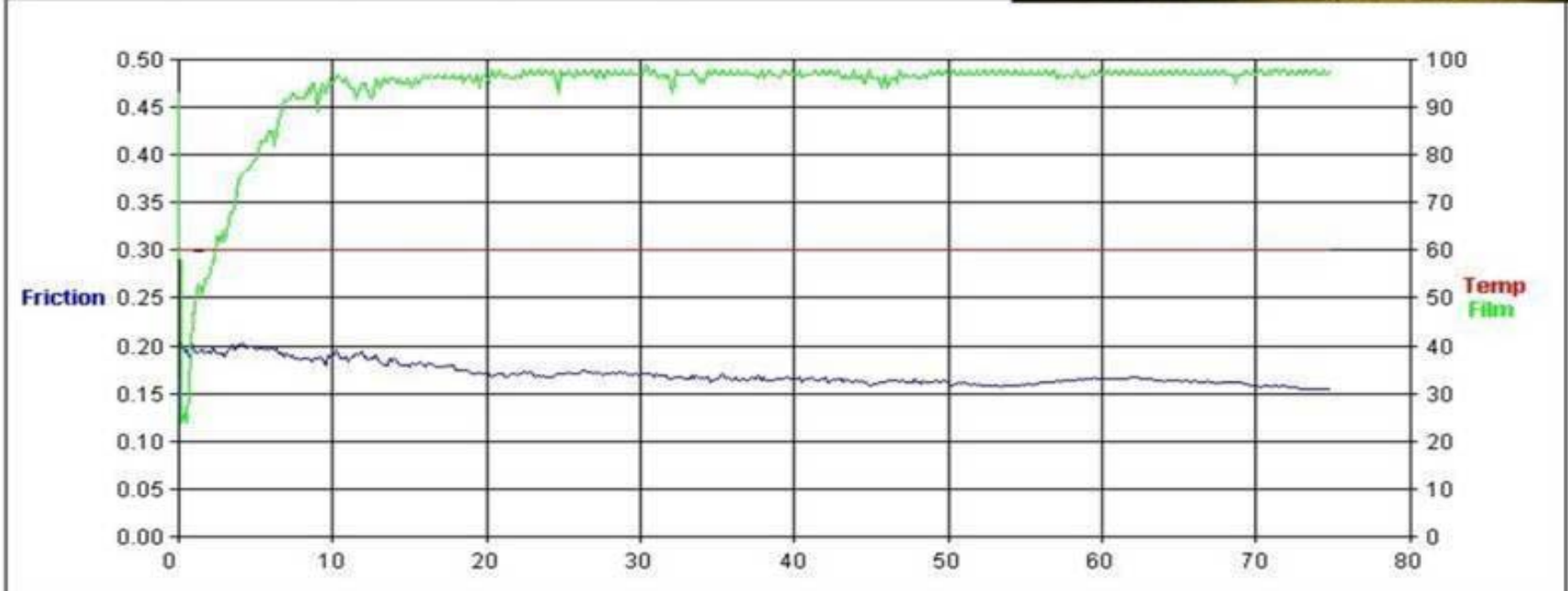
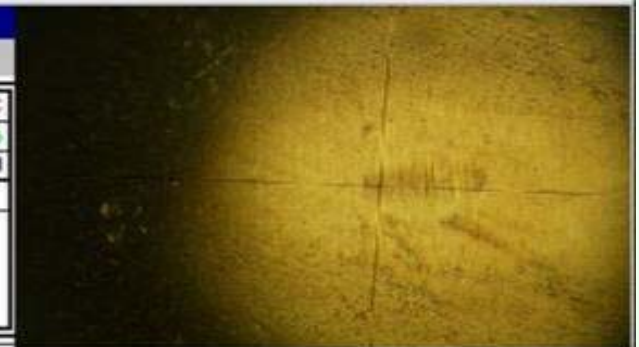


(100%)

: 180µm

: ISO VG 46

HFRPRINT					
File Customise					
Project	KPQI-SU	WS1.4	180 µm	Av. Temp	60.0 °C
Book Ref	SAM-1	Set Temp	60 °C	Av. Film	94 %
Date	23/01/06	Run Time	75 min	Av. Friction	0.170
Rig S/N	D491	Log Interval	10 sec	Comments	
Scar X/Y	224/150 µm	Test Load	200 g		
Scar Av.	187 µm	Frequency	50 Hz		
T Start/End	24/26 °C	Stroke	1000 µm		
H Start/End	46/47 %	Batch Ref	1.29		



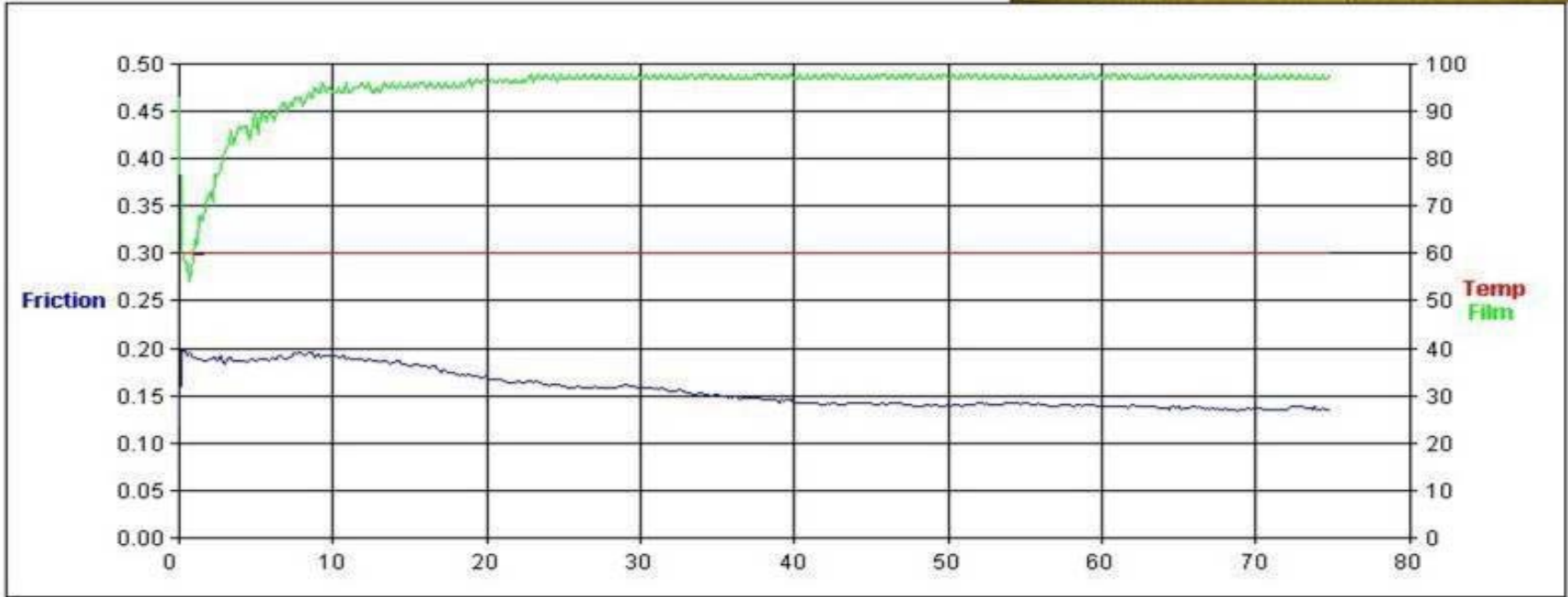
{ASTM D 6079 (HFRR :)}

78 Stanley Gardens, LONDON W3 7SZ, UK
Tel: +44(0)20 8600 9920. Fax: +44(0)20 8600 9921.

(100%)

: 147 μm : ISO VG 68

HFRPRINT					
File Customise					
Project	KPQI-SU	WS1.4	147 μm	Av. Temp	60.0 $^{\circ}\text{C}$
Book Ref	SAM-B	Set Temp	60 $^{\circ}\text{C}$	Av. Film	95 %
Date	23/01/06	Run Time	75 min	Av. Friction	0.156
Rig S/N	D491	Log Interval	10 sec	Comments	
Scar X/Y	180/130 μm	Test Load	200 g		
Scar Av.	155 μm	Frequency	50 Hz		
T Start/End	26/26 $^{\circ}\text{C}$	Stroke	1000 μm		
H Start/End	46/47 %	Batch Ref	1.29		



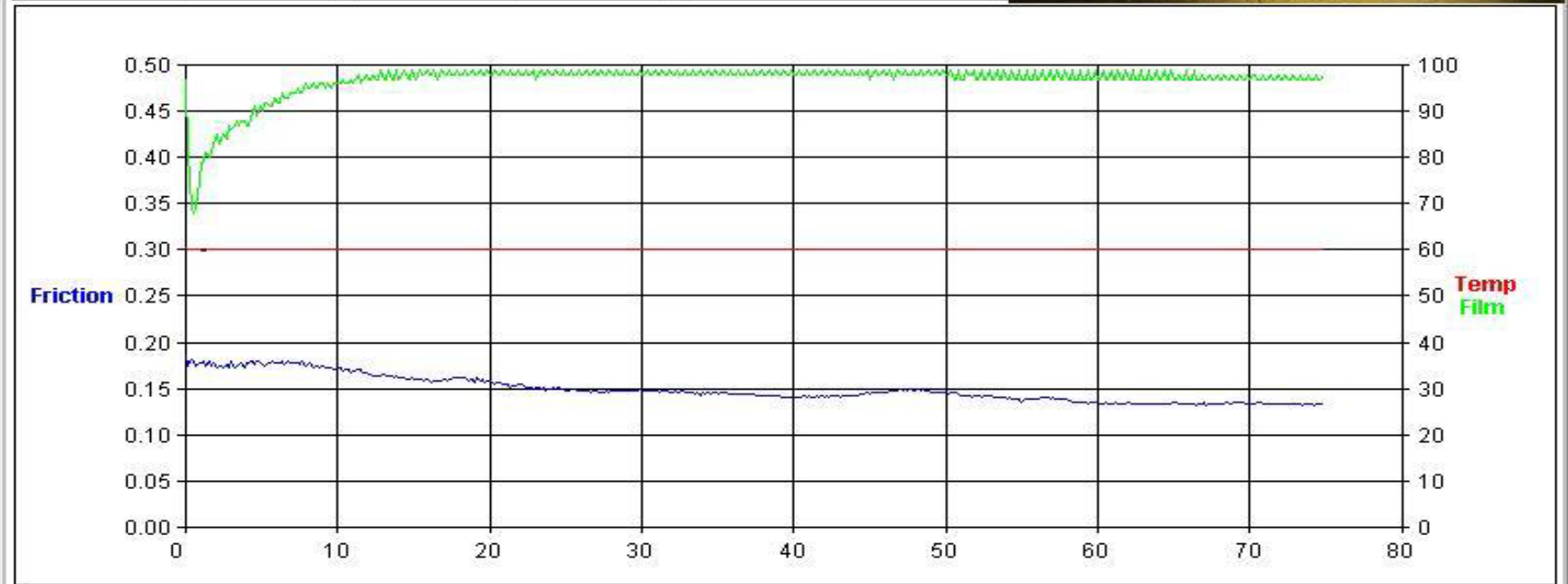
{ASTM D 6079 (HFRR :)}

78 Stanley Gardens, LONDON W3 7SZ, UK.
Tel: +44(0)20 8600 9920. Fax: +44(0)20 8600 9921.

(100%)

: 174 μ m : ISO VG 100

HFRPRINT					
File Customise					
Project	KPQI-SU	WS1.4	174 μ m	Av. Temp	60.0 °C
Book Ref	SAM-C	Set Temp	60 °C	Av. Film	97 %
Date	24/01/06	Run Time	75 min	Av. Friction	0.149
Rig S/N	D491	Log Interval	10 sec	Comments	
Scar X/Y	194/136 μ m	Test Load	200 g		
Scar Av.	165 μ m	Frequency	50 Hz		
T Start/End	24/25 °C	Stroke	1000 μ m		
H Start/End	40/41 %	Batch Ref	1.29		



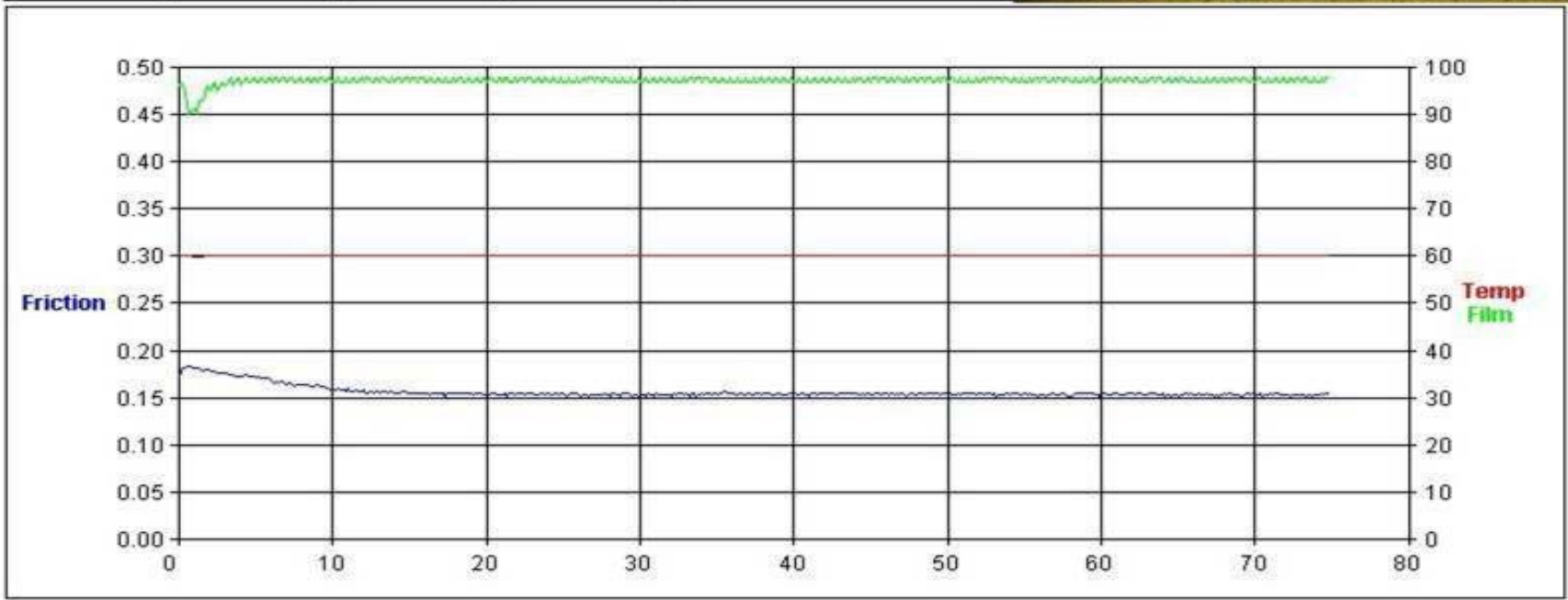
{ASTM D 6079 (HFRR :)}

78 Stanley Gardens, LONDON W3 7SZ, UK.
Tel: +44(0)20 8600 9920. Fax: +44(0)20 8600 9921.

(100%)

: 114 μ m : ISO VG 220

HFRPRINT					
File Customise					
Project	KPQI-SU	WS1.4	114 μ m	Av. Temp	60.0 °C
Book Ref	3316	Set Temp	60 °C	Av. Film	97 %
Date	23/01/06	Run Time	75 min	Av. Friction	0.156
Rig S/N	D491	Log Interval	10 sec	Comments	
Scar X/Y	140/101 μ m	Test Load	200 g		
Scar Av.	121 μ m	Frequency	50 Hz		
T Start/End	26/26 °C	Stroke	1000 μ m		
H Start/End	45/45 %	Batch Ref	1.29		



{ASTM D 6079 (HFRR :)}

78 Stanley Gardens, LONDON W3 7SZ, UK.
Tel: +44(0)20 8600 9920. Fax: +44(0)20 8600 9921.

Comp syn Series – 100%

100%

가 4,000

가

(가)

가		Comp Syn 32	Comp Syn 46	Comp Syn 68	Comp Syn 100	가
	40 , cSt	31.5	46.8	68.7	103.5	KS M 2014
	-	150	146	143	122	KS M 2014
		226	242	254	262	KS M 2010
()	170 , 12hr					KS M 2022
()	mgKOH/g ,100hr	0.029	0.031	0.032	0.032	KS M 2008
	107 ,22h %	0.3091	0.2959	0.066	0.066	KS M 2037
		- 50	- 50	- 50	- 50	KS M 2016
	, μm	180	180	147	147	ASTM D 6079
Ash()	%	0.001	0.002	0.002	0.003	KS M 6245
	100 , 3hr	1b	1b	1b	1b	KS M 2525
	, 24hr					KS M 2009
	Hg, Pb, Cd, Cr ⁺⁶					ICP - MS

가

Thank you!